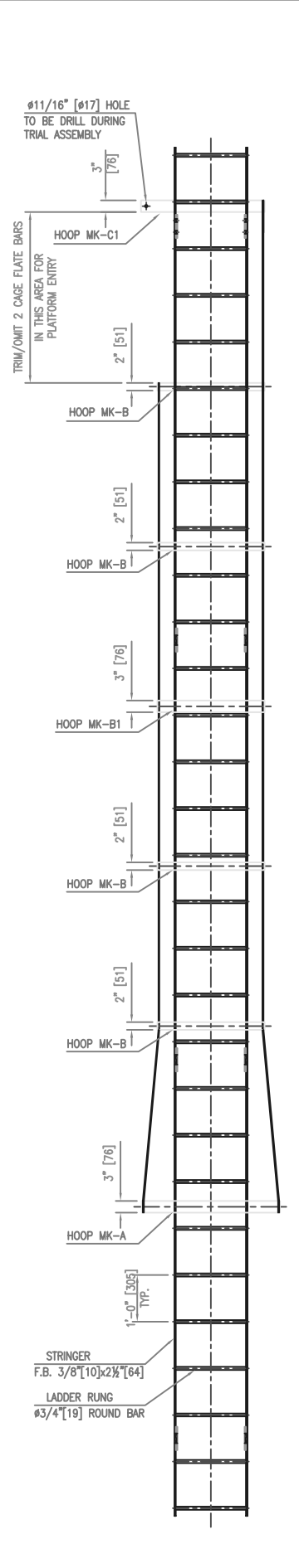
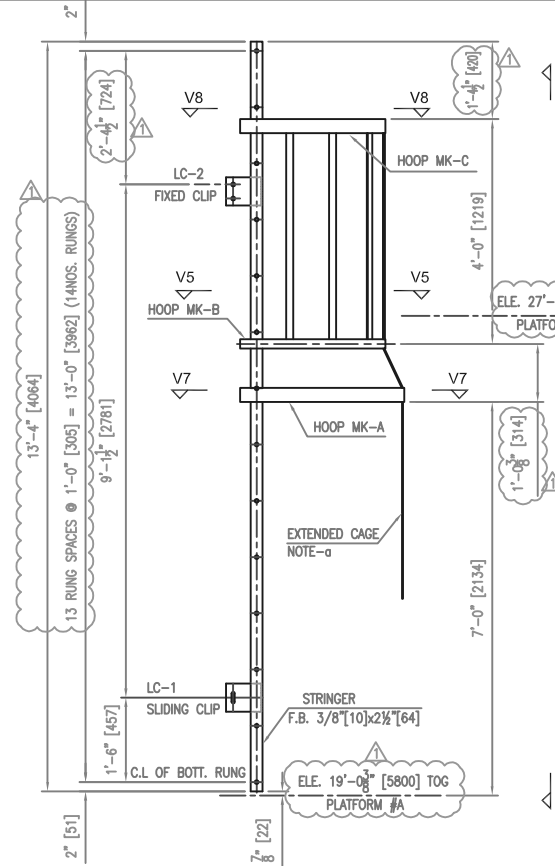


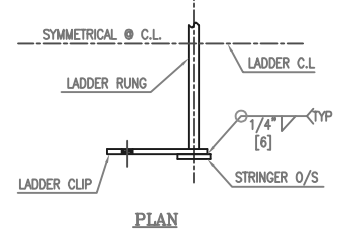
DETAIL OF LADDER #1 (ESTIMATED WEIGHT: 315Kg)



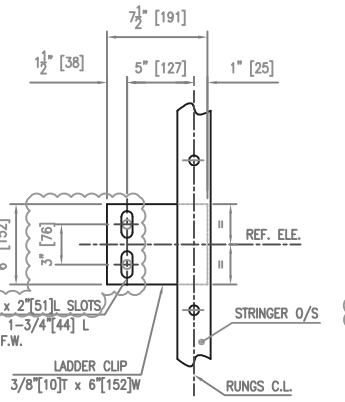
VIEW 'Y4-Y4'
(OTHER VERTICAL CAGE BAR NOT SHOWN FOR CLARITY)



DETAIL OF LADDER #2 (ESTIMATED WEIGHT: 126Kg)
(NOTE-a: EXTEND TOP 3 NOS. CAGE BAR APPROX. 7'-0" FIELD TO TRIM THESE BAR & WELD SAME TO HANDRAIL DURING ERECTION AT SITE.)

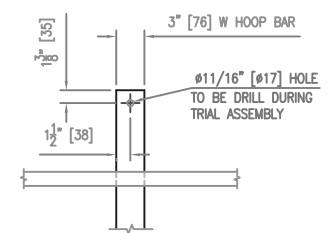


PLAN

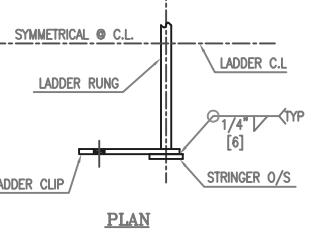


ELEVATION

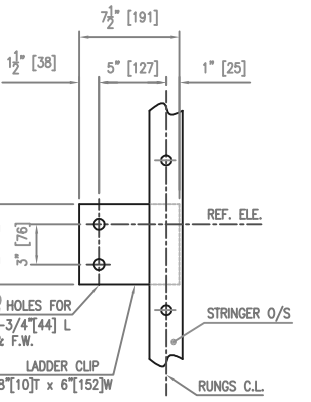
DETAIL OF LADDER CLIPS MARK "LC-1"
(4Nos. SETS* REQUIRED)
(* 1No. SET = 2Nos. CLIPS)



VIEW 'X1-X1'

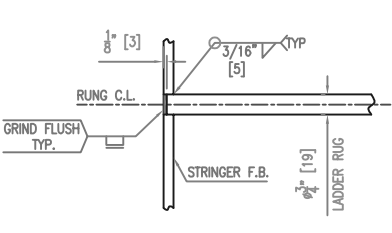


PLAN

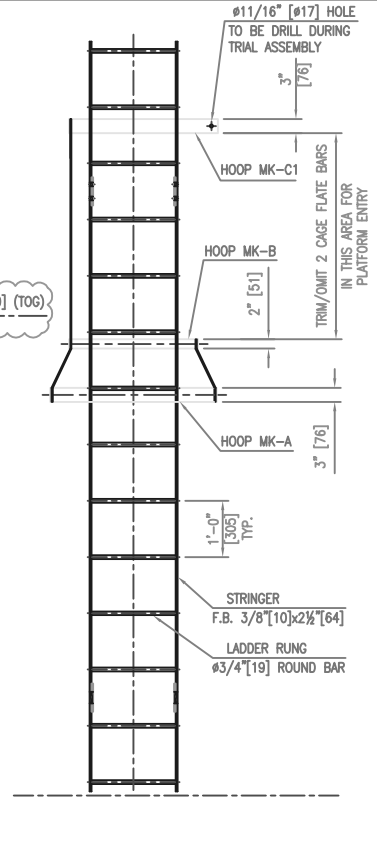


ELEVATION

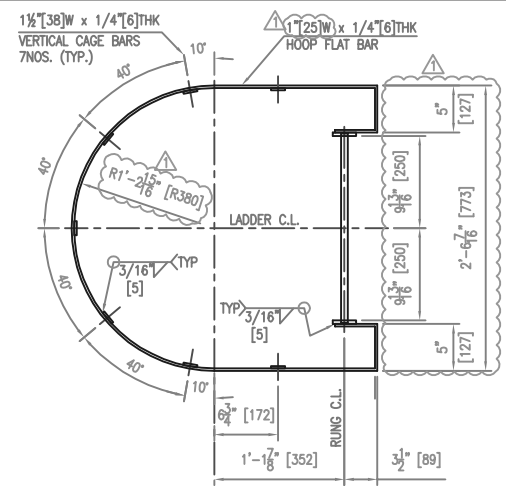
DETAIL OF LADDER CLIPS MARK "LC-2"
(2Nos. SETS* REQUIRED)
(* 1No. SET = 2Nos. CLIPS)



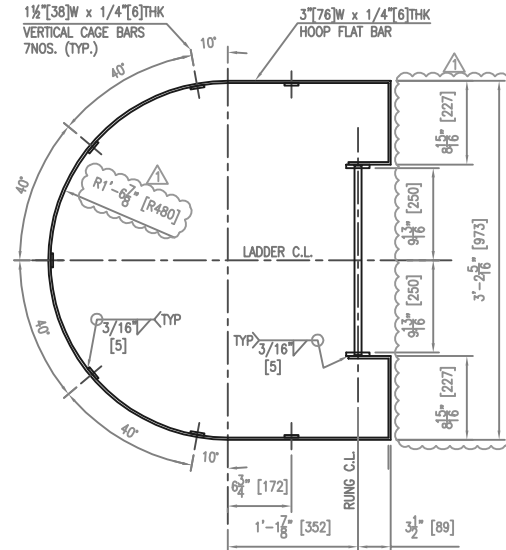
TYP. DETAIL OF RUNG WELD



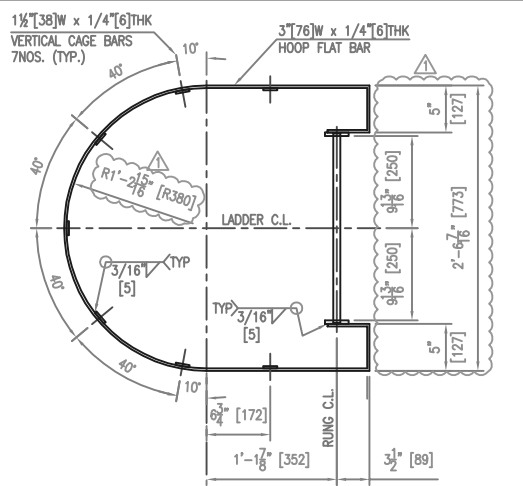
VIEW 'V9-V9'
(OTHER VERTICAL CAGE BAR NOT SHOWN FOR CLARITY)



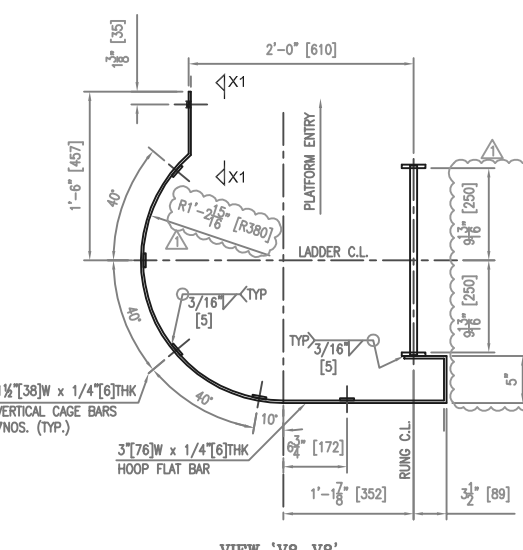
VIEW 'V5-V5'
(DETAIL OF "HOOP MK-B")
(5Nos. REQUIRED)



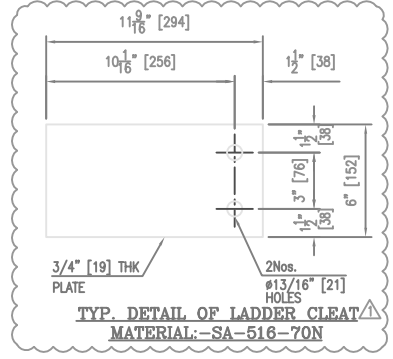
VIEW 'V7-V7'
(DETAIL OF "HOOP MK-A")
(2Nos. REQUIRED)



VIEW 'V6-V6'
(DETAIL OF "HOOP MK-B1")
(1No. REQUIRED)



VIEW 'V8-V8'
(DETAIL OF "HOOP MK-C1") (1No. REQUIRED) AS SHOWN
(DETAIL OF "HOOP MK-C") (1No. REQUIRED) OPPOSITE HAND @ LADDER C.L.



TYP. DETAIL OF LADDER CLEAT
MATERIAL: SA-516-70N

NO.	DESCRIPTION	MATERIAL	QTY.	WT.(Kg)
LADDER #2				
08	PLATE-12" x 6" x 3/4" T	SA-516-70N	04	28
07	HHMB W/NUT & FLAT WASHER- #5/8" [16] x 1-3/4" [44] L	A-325 (GALV.)	08	-
06	ROUND BAR-#3/4" x 25' Lg.	A-36	01	17
05	FLAT BAR-1/4" T x 1 1/2" W x 25' Lg.	A-36	01	15
04	FLAT BAR-1/4" T x 1" W x 8'-6" Lg.	A-36	01	3
03	FLAT BAR-1/4" T x 3" W x 19' Lg.	A-36	01	23
02	FLAT BAR-3/8" T x 2 1/2" W x 27' Lg.	A-36	01	37
01	PLATE-7 1/2" x 6" x 3/8" T	A-36	04	8
LADDER #1				
08	PLATE-12" x 6" x 3/4" T	SA-516-70N	08	56
07	HHMB W/NUT & FLAT WASHER- #5/8" [16] x 1-3/4" [44] L	A-325 (GALV.)	16	-
06	ROUND BAR-#3/4" x 55' Lg.	A-36	01	37
05	FLAT BAR-1/4" T x 1 1/2" W x 154' Lg.	A-36	01	89
04	FLAT BAR-1/4" T x 1" W x 34' Lg.	A-36	01	13
03	FLAT BAR-1/4" T x 3" W x 27'-3" Lg.	A-36	01	33
02	FLAT BAR-3/8" T x 2 1/2" W x 59' Lg.	A-36	01	81
01	PLATE-7 1/2" x 6" x 3/8" T	A-36	08	16

NO.	REVISION	CK	BY	DATE
1	REVISED AS PER COMMENTS.	AP	SP	12 05 05
0	PRELIMINARY	AP	SP	12 03 05